

TECHNICAL MANUAL

**ORGANIZATIONAL DIRECT SUPPORT, AND GENERAL SUPPORT
MAINTENANCE REPAIR PARTS AND SPECIAL TOOLS LISTS
(INCLUDING DEPOT MAINTENANCE REPAIR PARTS AND SPECIAL TOOLS)
FOR**

**CHARGER, BATTERY PP-1451/G
(NSN 6130-00-985-8157)**

TECHNICAL MANUAL }
No. 11-6130-236-24P }

HEADQUARTERS
DEPARTMENT OF THE ARMY
WASHINGTON, DC, 24 August 1976

**Organizational, Direct Support, and General Support
Maintenance Repair Parts and Special Tools Lists
(Including Depot Maintenance Repair Parts and Special Tools
for**

**CHARGER, BATTERY PP-1451/G
(NSN 6130-00-985-8157)**

Current as of 19 April 1976

REPORTING OF ERRORS

You can improve this manual by recommending improvements using DA Form 2028-2 (Test) located in the back of the manual. Simply tear out the self-addressed form, fill it out as shown on the sample, fold it where shown, and drop it in the mail.

If there are no blank DA Form 2028-2 (Test) in the back of your manual, use the standard DA Form 2028 (Recommended Changes to Publications and Blank Forms) and forward to the Commander, US Army Electronics Command, ATTN: DRSEL-MA-Q, Fort Monmouth, NJ 07703.

In either case a reply will be furnished direct to you.

Table of Contents

	Page	Illus. Figure
Section I. Introduction	1	
II. Repair parts list	5	
Group 00. Charger,, Battery PP-1451/G	5	1-5
Section III. Special tools list (Not applicable)		
IV. National stock number and part number index	20	

*This manual supersedes TM 11-6130-236-24P, 10 October 1972.

SECTION I

INTRODUCTION

1. Scope

This manual lists repair parts and special tools required for performance of organizational, direct support, and general support maintenance of the PP-1451/G.

2. General

This Repair Parts and Special Tools List is divided into the following sections:

a. Section II. Repair Parts List. A list of repair parts authorized for use in the performance of maintenance. The list also includes parts which must be removed for replacement of the authorized parts. Parts lists are composed of functional groups in ascending numerical sequence, with the parts in each group listed in figure and item number sequence.

b. Section III. Special Tools List. Not applicable.

c. Section IV. National Stock Number and Part Number Index. A list, in ascending National item identification number (NIIN, last 9 digits) sequence, of all National stock numbers appearing in the listings, followed by a list, in alphabetic sequence, of all part numbers appearing in the listings. National stock number and part numbers are cross-referenced to each illustration figure and item number appearance.

3. Explanation of Columns

The following provides an explanation of columns found in the tabular listings:

a. Illustration. This column is divided as follows:

(1) *Figure number.* Indicates the figure number of the illustration in which the item is shown.

(2) *Item number.* The number used to identify each item called out in the illustration.

b. Source, Maintenance, and Recoverability Codes (SMR).

(1) *Source code.* Source codes are assigned to support items to indicate the manner of acquiring support items for maintenance, repair, or overhaul of end items. Source codes are entered in the first and second positions of the Uniform SMR Code format as follows:

<i>Code</i>	<i>Definition</i>
PA	—Item procured and stocked for anticipated or known usage.
XA	—Item is not procured or stocked because the requirements for the item will result in the replacement of the next higher assembly.
XD	—A support item that is not stocked. When required, item will be procured through normal supply channels.

NOTE

Cannibalization or salvage may be used as a source of supply for any items source coded above except those coded XA, XD, and aircraft support items as restricted by AR 700-42.

(2) *Maintenance code.* Maintenance codes are assigned to indicate the levels of maintenance authorized to USE and REPAIR support items. The maintenance codes are entered in the third and fourth positions of the Uniform SMR Code format as follows:

(a) The maintenance code entered in the third position will indicate the lowest maintenance level authorized to remove, replace, and use the support item. The maintenance code entered in the third position will indicate one of the following levels of maintenance:

<i>Code</i>	<i>Application/Explanation</i>
O	-Support item is removed, replaced, used at the organizational level.
F	-Support item is removed, replaced, used at the direct support level.

(b) The maintenance code entered in the fourth position indicates whether the item is to be repaired and identifies the lowest maintenance

level with the capability to perform complete repair (i.e., all authorized maintenance functions). This position will contain the following maintenance code:

<i>Code</i>	<i>Application/Explanation</i>
Z	—Nonreparable. No repair is authorized.

(3) *Recoverability code*. Recoverability codes are assigned to support items to indicate the disposition action on unserviceable items. The recoverability code is entered in the fifth position of the Uniform SMR Code format as follows:

Recoverability codes	Definition
Z	—Nonreparable item. When unserviceable, condemn and dispose at the level indicated in position 3.

c. National Stock Number. Indicates the National stock number assigned to the item and will be used for requisitioning purposes.

d. Part Number. Indicates the primary number used by the manufacturer (individual, company, firm, corporation or Government activity), which controls the design and characteristics of the item by means of its engineering drawings, specifications standards, and inspection requirements, to identify an item or range of items.

NOTE

When a stock numbered item is requisitioned, the repair part received may have a different part number than the part being replaced.

e. Federal Supply Code for Manufacturer (FSCM) The FSCM is a 5-digit numeric code listed in SB 708-42 which is used to identify the manufacturer, distributor, or Government agency, etc.

f. Description. Indicates the Federal item name and, if required, a minimum description to identify the item.

g. Unit of Measure (U/M). Indicates the standard of the basic quantity of the listed item as used in performing the actual maintenance function. This measured is expressed by a two-character alphabetical abbreviation (e.g., ea, in, pr, etc.). When the unit of measure differs from the unit of issue, the lowest unit of issue that will satisfy

the required units of measure will be requisitioned.

h. Quantity Incorporated in Unit. Indicates the quantity of the item used in the breakout shown on the illustration figure, which is prepared for a functional group, subfunctional group or an assembly.

4. Special Information

The following publications pertain to the PP-1451/G and its components:

TM 11-6130-236-12, Charger, Battery PP-1451/G
G

TM 11-6130-236-35, Charger, Battery PP-1451/G

5. How to Locate Repair Parts

a. When National stock number or part number is unknown.

(1) *First*. Using the table of contents, determine the functional group within which the repair part belongs. This is necessary since illustrations are prepared for functional groups and listings are divided into the same groups.

(2) *Second*. Find the illustration covering the functional group to which the repair part belongs.

(3) *Third*. Identify the repair part on the illustration and note the illustration figure and item number of the repair part.

(4) *Fourth*. Using the Repair Parts Listing, find the figure and item number noted on the illustration.

b. When National stock number or part number is known.

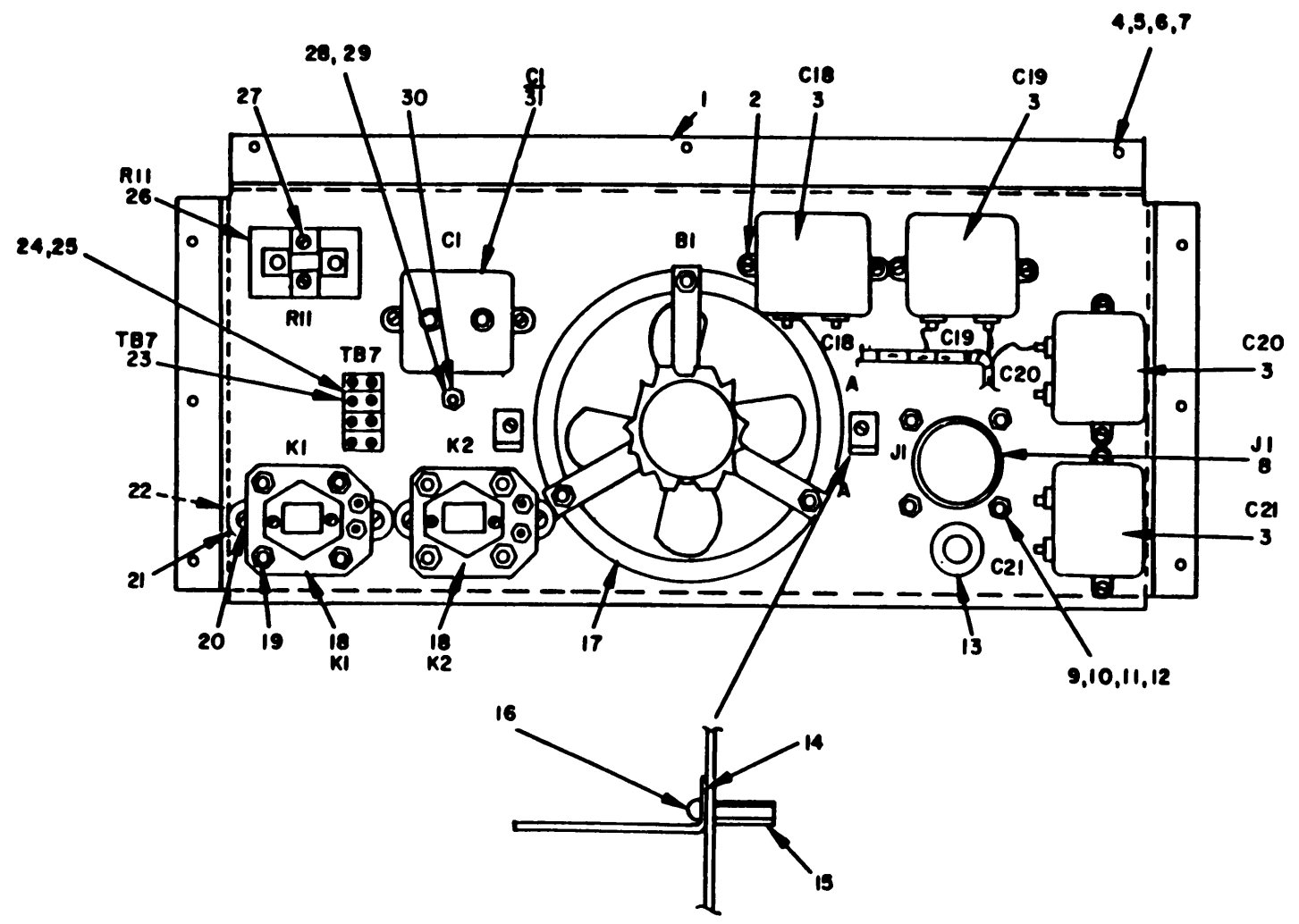
(1) *First*. Using the Index of National Stock Numbers and Part Numbers, find the pertinent National stock number or part number. This index is in ascending NIIN sequence followed by a list of part numbers in ascending alphameric sequence, cross-referenced to the illustration figure number and item number.

(2) *Second*. After finding the figure and item number, locate the figure and item number in the repair parts list.

6. Abbreviations

Not applicable.

(Next printed page is 4)



EL2FROOI

Figure 1. Charger, Battery PP-1451/G,Rear Subassembly.

SECTION II (1) ILLUSTRATION (A) (B) FIG ITEM NO NO		(2) SMR CODE	(3) NATIONAL STOCK NUMBER	(4) PART NUMBER	(5) FSCM	TM11-6130-236-24P (6) DESCRIPTION	(7) USABLE ON CODE U/M	(8) QTY INC IN UNIT
						GROUP 00 CHARGE,BATTERY PP-1451/G		
1	1	XDFZZ		SMD379617	80063	CHASSIS ASSEMBLY,REAR	EA	1
1	2	PAFZZ	5305-00-984-6192	MS35206-244	96906	SCREW	EA	12
1	3	PAFZZ	5910-00-129-6260	CP5381EF105K1	81349	CAPACITOR, FIXED, PAPER DIELECTRIC	EA	4
1	4	PAFZZ	5310-00-934-9757	MS35649-282	96906	NUT,PLAIN,HEXAGON	EA	24
1	5	PAFZZ	5310-00-045-3299	MS35338-42	96906	WASHER,LOCK	EA	23
1	6	PAFZZ	5310-00-809-8544	MS27183-7	96906	WASHER,FLAT	EA	23
1	7	PAFZZ	5305-00-059-4568	MS35190-253	96906	SCREW	EA	9
1	8	PAFZZ	5935-00-577-2697	MS3102E28-3P	96906	CONNECTOR,RECEPTACLE,ELECTRICAL	EA	1
1	9	PAFZZ	5305-00-889-3000	MS35206-230	96906	SCREW	EA	4
1	10	PAFZZ	5310-00-983-8483	MS27183-5	96906	WASHER,FLAT	EA	8
1	11	PAFZZ	5310-00-045-4007	MS35338-41	96906	WASHER,LOCK	EA	8
1	12	PAFZZ	5310-00-934-9747	MS35649-262	96906	NUT,PLAIN,HEXAGON	EA	4
1	13	PAFZZ	5325-00-281-1557	MS35489-17	96906	GROMMET	EA	1
1	14	XDFZZ		SMB379629	80063	BRACKET,ANGLE	EA	2
1	15	XDFZZ		SMB379622	80063	POST, ELECTRICAL-MECHANICAL EQUIPMENT	EA	2
1	16	PAFZZ	5305-00-984-6194	MS35206-246	96906	SCREW	EA	5
1	17	PAFZZ	6130-00-906-1120	SMC379625	80063	FAN,AXIAL	EA	1
1	18	PAFZZ	5945-00-230-7738	MS24178	96906	RELAY	EA	2
1	19	PAFZZ	5310-00-934-9751	MS35650-302	96906	NUT,PLAIN,HEXAGON	EA	1
1	20	PAFZZ	5305-00-989-7434	MS35207-263	96906	SCREW	EA	4
1	21	PAFZZ	5310-00-809-8546	MS27183-8	96906	WASHER,FLAT	EA	4
1	22	PAFZZ	5310-00-045-3296	MS35338-43	96906	WASHER,LOCK	EA	4
1	23	XDFZZ		MILT55164-1TYPE	81349	TERMINAL BOARD	EA	1
1	24	PAFZZ	5310-00-631-1294	NAS671-6	80205	NUT,PLAIN,HEXAGON	EA	4
1	25	PAFZZ	5305-00-889-3001	MS35206-231	96906	SCREW	EA	4
1	26	PAFZZ	6625-00-834-8954	MS91586-3	96906	SHUNT, INSTRUMENT	EA	1
1	27	PAFZZ	5305-00-984-6195	MS35206-247	96906	SCREW	EA	2
1	28	PAFZZ	5310-00-543-2410	MS35338-40	96906	WASHER,LOCK	EA	1
1	29	PAFZZ	5305-00-889-3116	MS35206-213	96906	SCREW	EA	1
1	30	PAFZZ	5940-00-082-5054	SE205001	81349	TERMINAL,STUD	EA	1
1	31	PAFZZ	5910-00-819-2100	CP5481KE105K1	81349	CAPACITOR, FIXED, PAPER DIELECTRIC	EA	1

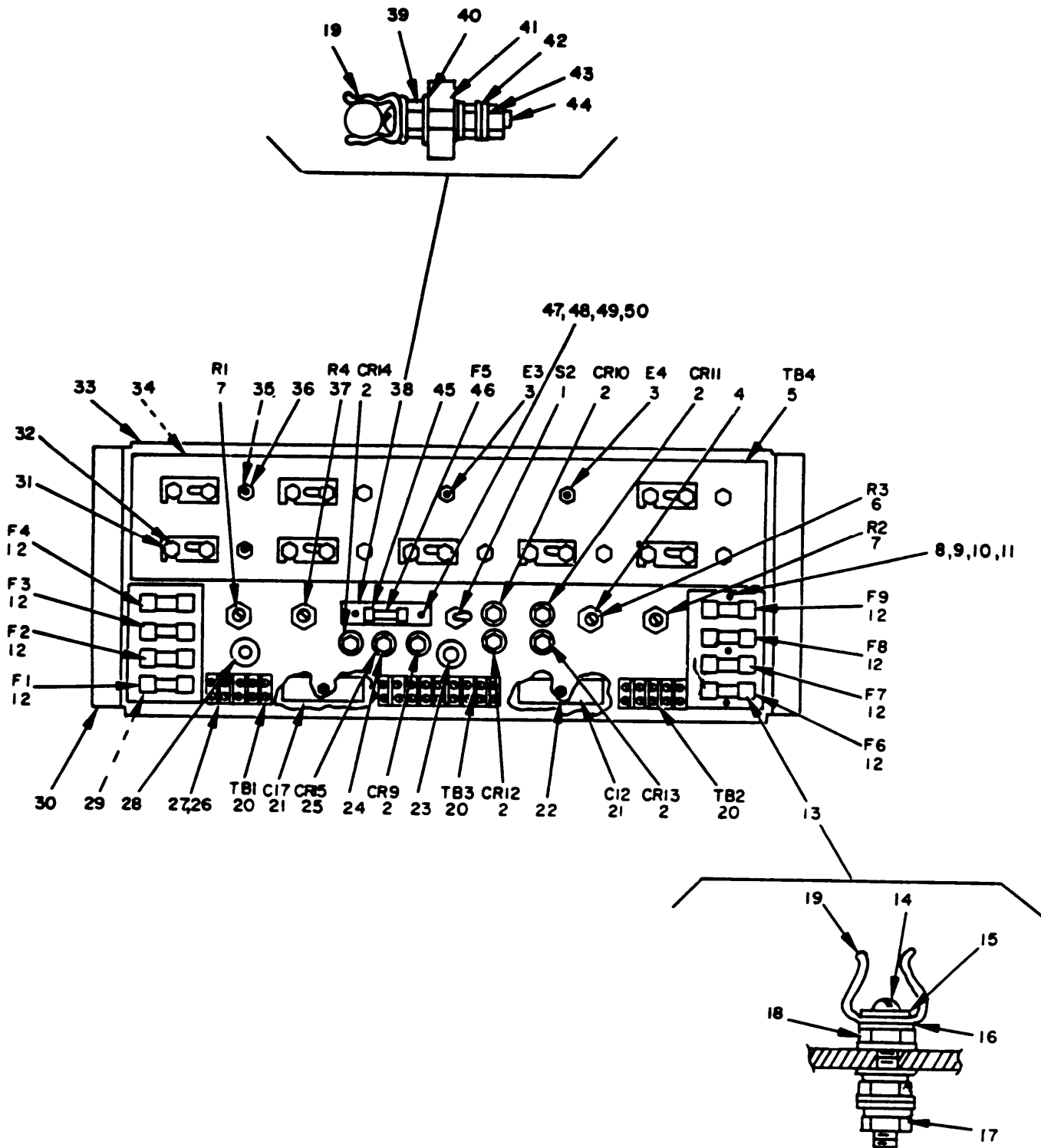


Figure 2. Charger, Battery PP-1451/G, Lower Front Subassembly.

SECTION II		TM11-6130-236-24P						
(1)	(2)	(3)	(4)	(5)	(6)	(7)	(8)	
ILLUSTRATION					DESCRIPTION	USABLE ON CODE	U/M	
(A)	(B)	NATIONAL	PART	FSCM				
FIG	ITEM	STOCK	NUMBER					
NO	NO	NUMBER	NUMBER				INC	
							IN	
							UNIT	
2	1	PAFZZ	5930-00-655-1582	MS35059-23	96906	SWITCH, TOGGLE	EA	1
2	2	PAFZZ	5961-00-978-5966	1N1614	81349	SEMICONDUCTOR DEVIC, DIODI	EA	6
2	3	XDFZZ		SMB379632-2	80063	STRAP, SHORTING	EA	2
2	4	XDFZZ		MILT55155-20	81349	TERMINAL, STUD	EA	4
2	5	XDFZZ		SMD379643	80063	TERMINAL BOARD	EA	1
2	6	PFZZ	5905-00-982-7725	RP101UB350KK	81349	RESISTOR, VARIABLE	EA	1
2	7	PAFZZ	5905-00-186-3077	RP101UB100K	81349	RESISTOR, VARIABLE	EA	2
2	8	XDFZZ		AN501810-18	88044	SCREW	EA	8
2	9	PAFZZ	5310-00-045-3299	MS35338-42	96906	WASHER, LOCK	EA	22
2	10	PAFZZ	5310-00-809-8544	MS27183-7	96906	WASHER, FLAT	EA	22
2	11	PAFZZ	5310-00-934-9757	MS35649-282	96906	NUT, PLAIN, HEXAGON	EA	14
2	12	PAFZZ	5920-00-050-4962	MILF15160-07	81349	FUSE, CARTRIDGE	EA	8
2	13	XDFZZ		SMB379641	80063	BOARD ASSEMBLY, FUSE	EA	2
2	14	PAFZZ	5305-00-984-6194	MS35206-246	96906	SCREW	EA	10
2	15	PAFZZ	5310-00-261-8278	MS35338-100	96906	WASHER, LOCK	EA	75
2	16	PAFZZ	5310-00-045-5207	MS15795-908	96906	WASHER, FLAT	EA	94
2	17	XDFZZ		SMB379633	80063	STRAP, SHORTING	EA	2
2	18	PAFZZ	5310-00-934-9766	MS35650-305	96906	NUT, PLAIN, HEXAGON	EA	24
2	19	XDFZZ		MILF21346-1	81349	CLIP, SPRING TENSION	EA	10
2	20	XDFZZ		MILT55164-2	81349	TERMINAL BOARD	EA	3
2	21	PAFZZ	5910-00-062-4751	CE13C500J	81349	CAPACITOR, FIXED, ELECTROLYTIC	EA	2
2	22	PAFZZ	5910-00-667-7178	30010-4	14655	RETAINER, CAP	EA	2
2	23	PAFZZ	5325-00-276-5954	MS35489-46	96906	GROMMET	EA	1
2	24	XDFZZ	5940-00-271-7086	122-196	79963	TERMINAL, LUG	EA	14
2	25	PAFZZ	5961-00-836-0383	1N29858	81349	SEMICONDUCTOR, DIVICE, DIODE	EA	1
2	26	PAFZZ	5310-00-631-1294	NAS671-6	80205	NUT, PLAIN, HEXAGON	EA	12
2	27	PAFZZ	5305-00-889-3001	MS35206-231	96906	SCREW	EA	12
2	28	PAFZZ	5325-00-185-0017	MS35489-33	96906	GROMMET	EA	2
2	29	XDFZZ		SMB379637	80063	INSULATOR, PLATE	EA	1
2	30	XDFZZ		SMD379610-1	80063	CHASSIS, ELECTRICAL EQUIPMENT	EA	1
2	31	PAFZZ	5310-00-934-9764	MS35649-205	96906	NUT, PLAIN, HEXAGON	EA	103
2	32	XDFZZ		SMB379612	80063	BAR, SHORTING	EA	8
2	33	XDFZZ		SMD379610	80063	CHASSIS, ELECTRICAL EQUIPMENT	EA	1
2	34	PAFZZ	5310-00-837-8435	CLS832-2	46384	NUT, SELF-LOCKING, CLINCH	EA	4
2	35	PAFZZ	5310-00-942-5110	MS35335-88	96906	WASHER, LOCK	EA	52
2	36	XDFZZ		SMD379643-1	80063	STUD, CONTINUOUS THREAD	EA	26
2	37	XDFZZ		RP101U8501KK	81349	RESISTOR, VARIABLE	EA	1
2	38	XAFZZ		SMB379642	80063	BOARD ASSEMBLY, FUSE	EA	1
2	39	PAFZZ	5310-00-934-9746	MS35649-245	96906	NUT, PLAIN, HEXAGON	EA	6
2	40	PAFZZ	5310-00-045-5202	MS15795-903	96906	WASHER, FLAT	EA	10

SECTION II		TM11-6130-236-24P						
(1)	(2)	(3)	(4)	(5)	(6)	(7)	(8)	
ILLUSTRATION							QTY	
(A)	(B)	NATIONAL	PART		DESCRIPTION	USABLE ON CODE	INC	
FIG	ITEM	STOCK	NUMBER	FSCM			IN	
NO	NO	NUMBER	NUMBER				UNIT	
2	41	XDFZZ		SMC379611	80063	INSULATOR, PLATE	EA	1
2	42	XDFZZ		SMB379632-1	80063	STRAP, SHORTING	EA	1
2	43	PAFZZ	5310-00-184-8996	MS35338-97	96906	WASHER, LOCK	EA	4
2	44	PAFZZ	5305-00-837-1673	AN50084-12	88044	SCREW	EA	2
2	45	XDFZZ		SMB379636	80063	INSULATOR, PLATE	EA	1
2	46	PAFZZ	5920-00-280-3529	F028250V1-4AS	81349	FUSE, CARTRIDGE	EA	1
2	47	PAFZZ	5310-00-934-9747	MS35649-262	96906	NUT, PLAIN, HEXAGON	EA	2
2	48	PAFZZ	5310-00-045-4007	MS35338-41	96906	WASHER, LOCK	EA	14
2	49	PAFZZ	5310-00-983-8483	MS27183-5	96906	WASHER, FLAT	EA	14
2	50	PAFZZ	5305-00-889-3000	MS35206-230	96906	SCREW	EA	2

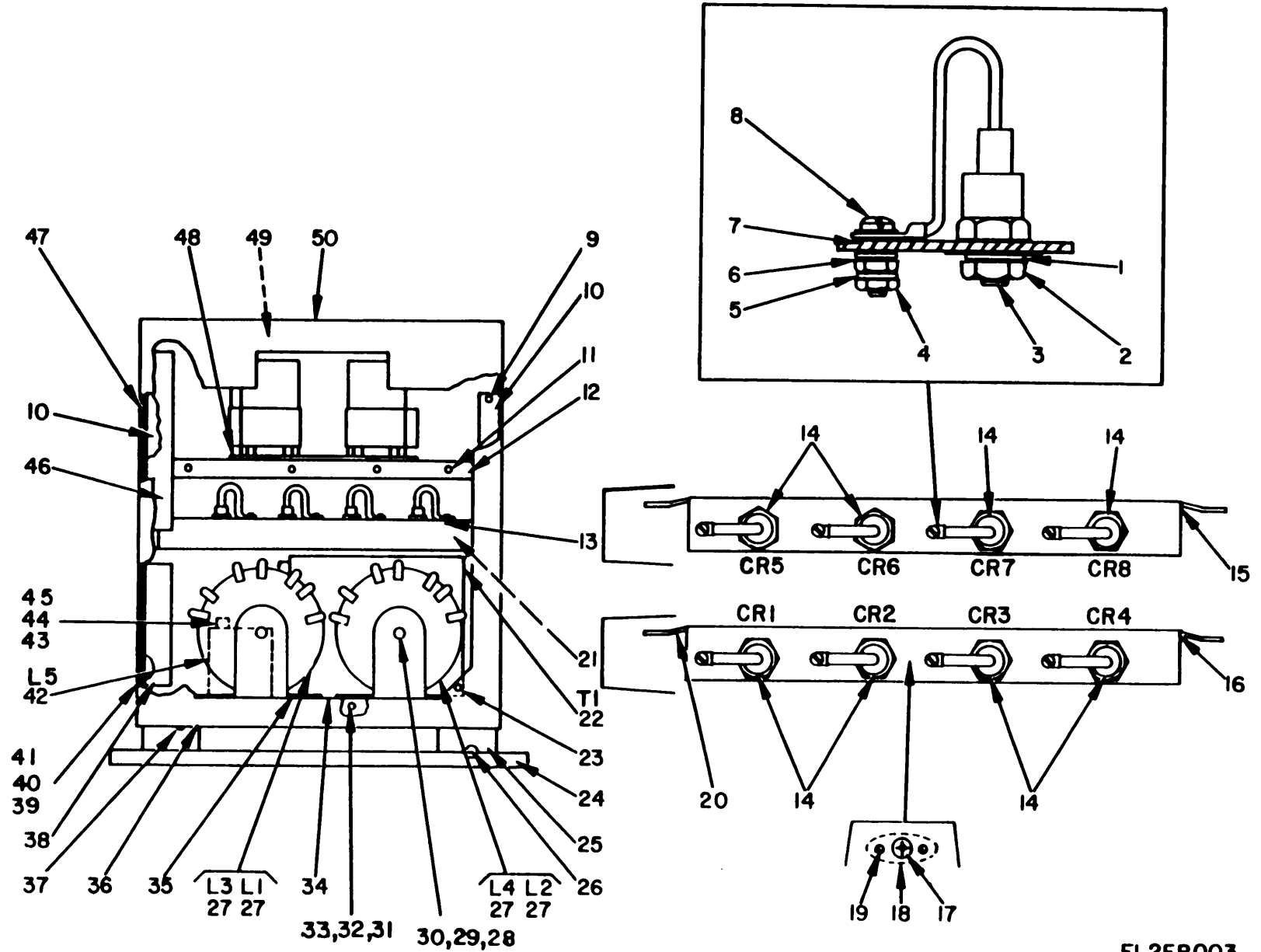
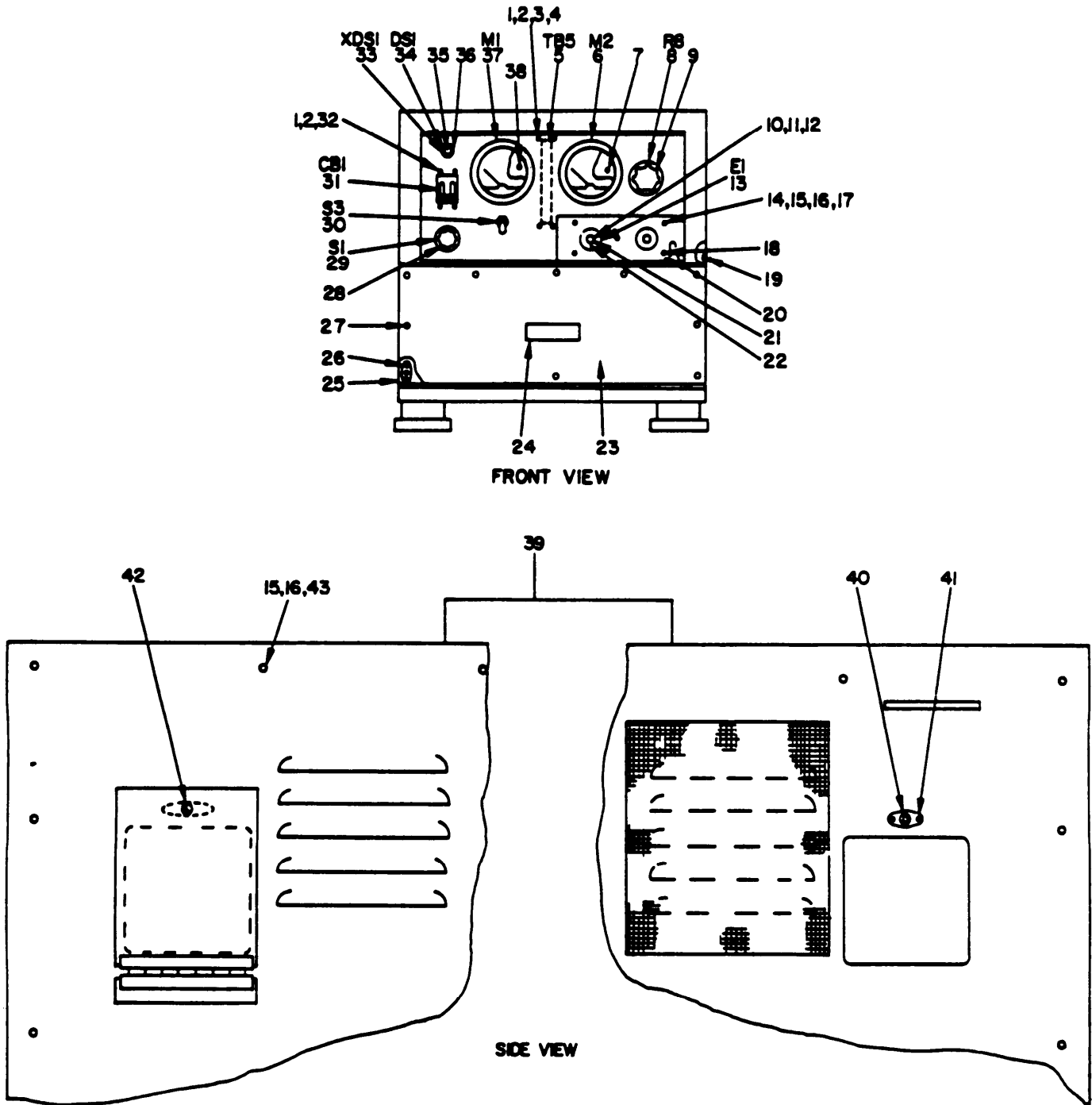


Figure 3. Charger, Battery PP-1451/G, Right Side View.

EL2FR003

SECTION II (1) ILLUSTRATION (A) FIG NO		(2) ITEM NO	(3) SMR CODE	(4) NATIONAL STOCK NUMBER	(5) PART NUMBER	(6) FSCM	TM11-6130-236-24P (6) DESCRIPTION	(7) USABLE ON CODE	(8) QTY INC IN UNIT
3	1	XDFZZ			SMB379635	80063	WASHER, FLAT	EA	8
3	2	PAFZZ	5310-00-934-9757	MS35649-282		96906	NUT, PLAIN, HEXAGON	EA	6
3	3	PAFZZ	5305-00-059-4568	MS35190-253		96906	SCREW	EA	6
3	4	PAFZZ	5310-00-983-9467	MS35691-8		96906	NUT, PLAIN, HEXAGON	EA	16
3	5	PAFZZ	5310-00-167-0702	AN960B416		88044	WASHER, FLAT	EA	46
3	6	PAFZZ	5310-00-184-8970	MS35338-101		96906	WASHER, LOCK	EA	16
3	7	PAFZZ	5310-00-915-4649	1209N		06540	INSULATOR, WASHER	EA	16
3	8	PAFZZ	5305-00-954-9009	MS35215-74		96906	SCREW	EA	8
3	9	PAFZZ	5310-00-725-4715	CLSS032-3		46384	NUT, SELF-LOCKING, CLINCH	EA	1
3	10	XDFZZ			SMB379647-1	80063	BRACKET	EA	2
3	11	PAFZZ	5305-00-984-7341	MS35191-273		96906	SCREW	EA	2
3	12	XDFZZ			SMB379648-1	80063	BRACKET	EA	1
3	13	XAFZZ			SMC379621GR1	80063	SEMICONDUCTOR DEVICE ASSEMBLY, DICODE	EA	1
3	14	PAFZZ	5961-00-959-5046	194-1246511F		03508	SEMICONDUCTOR DEVICE, DIODE	EA	8
3	15	XDFZZ			SMB379619-1	80063	BRACKET, ANGLE	EA	1
3	16	XDFZZ			SMB379619-2	80063	BRACKET, ANGLE	EA	1
3	17	PAFZZ	5310-00-725-8532	CLS832-3		46384	NUT, SELF-LOCKING, CLINCH	EA	15
3	18	PAFZZ	5325-00-267-9222	12R1-1AA		71286	RECEPTACLE, STUD, TURNLOCK FASTENER	EA	3
3	19	PAFZZ	5320-00-233-4836	MS20427-2C4		96906	RIVET	EA	6
3	20	XDFZZ			SMC379658-1	80063	BRACKET, ANGLE	EA	1
3	21	XAFZZ			SMC379621GR2	80063	SEMICONDUCTOR DEVICE ASSEMBLY, DIODE	EA	1
3	22	PAFZZ	6120-00-238-9441	NE7823		94315	TRANSFORMER, POWER, STEP-ON	EA	1
3	23	PAFZZ	5310-00-851-2682	MS35691-17		96906	NUT, PLAIN, HEXAGON	EA	6
3	24	XDFZZ			SMB379618	80063	SKID	EA	1
3	25	PAFZZ	5340-00-514-1330	C2060-6		81860	MOUNT, RESILIENT	EA	2
3	26	PAFZZ	5305-00-988-1724	MS35206-280		96906	SCREW	EA	8
3	27	PAFZZ	5950-00-902-3442	3321		97622	AMPLIFIER, MAGNETIC	EA	4
3	28	PAFZZ	5310-00-851-2674	MS35691-1		96906	NUT, PLAIN, HEXAGON	EA	22
3	29	PAFZZ	5310-00-809-4058	MS27183-10		96906	WASHER, FLAT	EA	26
3	30	PAFZZ	5310-00-582-5965	MS35338-44		96906	WASHER, LOCK	EA	30
3	31	PAFZZ	5305-00-269-3215	MS90725-65		96906	SCREW	EA	4
3	32	PAFZZ	5310-00-080-6004	MS27183-14		96906	WASHER, FLAT	EA	10
3	33	PAFZZ	5310-00-637-9541	MS35338-46		96906	WASHER, LOCK	EA	10
3	34	XDFZZ			SMB379624	80063	BASE ASSEMBLY	EA	1
3	35	XDFZZ			SMB379648-2	80063	BRACKET	EA	1
3	36	XDFZZ			SMB379647	80063	BRACKET	EA	2
3	37	PAFZZ	5305-00-989-7434	MS35207-263		96906	SCREW	EA	8
3	38	XDFZZ			SMC379658	80063	BRACKET ASSEMBLY	EA	1
3	39	XDFZZ	5305-00-984-6192	MS35206-244		96906	SCREW	EA	42
3	40	PAFZZ	5310-00-809-8544	MS27183-7		96906	WASHER, FLAT	EA	56

SECTION II		TM11-6130-236-24P						
(1)	(2)	(3)	(4)	(5)	(6)	(7)	(8)	
ILLUSTRATION							QTY	
(A)	(B)	NATIONAL	PART		DESCRIPTION	USABLE ON CODE	INC	
FIG	ITEM	STOCK	NUMBER	FSCM			IN	
NO	NO	NUMBER	NUMBER				UNIT	
3	41	PAFZZ 5310-00-045-3299	MS35338-42	96906	WASHER, LOCK	EA	56	
3	42	PAFZZ 5950-00-902-3443	NE7824	94315	REACTOR	EA	1	
3	43	PAFZZ 5310-00-045-3296	MS35228-43	96906	WASHER, LOCK	EA	14	
3	44	PAFZZ 5310-00-809-8546	MS27183-8	96906	WASHER, FLAT	EA	14	
3	45	PAFZZ 5310-00-934-9751	MS35650	96906	NUT, PLAIN, HEXAGON	EA	14	
3	46	XDFZZ	SMO379614	80063	CHASSIS ASSEMBLY	EA	1	
3	47	XDFZZ	SMC379659-1	80063	BRACKET, ANGLE	EA	1	
3	48	XDFZZ	SMC379659	80063	BRACKET, ANGLE	EA	1	
3	49	XDFZZ	SMD379609	80063	PANEL, SIDE	EA	2	
3	50	XDFZZ	SMO379605	80063	COVER, BATTERY CHARGER	EA	1	

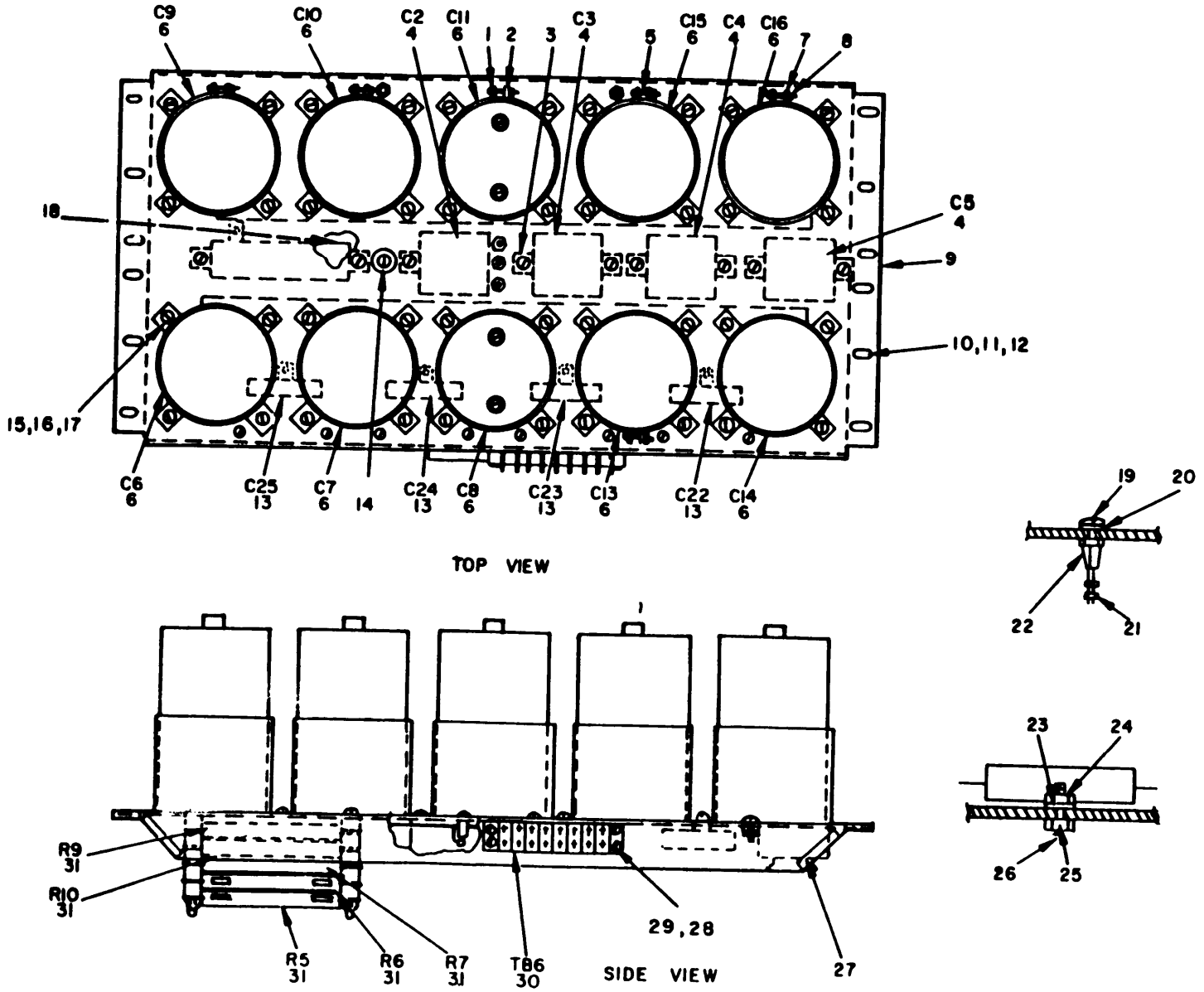


EL2FR004

Figure 4. Charger, Battery PP-1451/G,Front and Left Side Views.

SECTION II		TM11-6130-236-24P						
(1)	(2)	(3)	(4)	(5)	(6)	(7)	(8)	
ILLUSTRATION								
(A)	(B)	NATIONAL	PART		DESCRIPTION	USABLE ON CODE	U/M	
FIG	ITEM	STOCK	NUMBER	FSCM				
NO	NO	NUMBER	NUMBER				INC	
							IN	
							UNIT	
4	1	PAFZZ 5310-00-045-4007	MS35338-41	96906	WASHER, LOCK		EA 8	
4	2	PAFZZ 5310-00-983-8483	MS27183-5	96906	WASHER, FLAT		EA 8	
4	3	PAFZZ 5305-00-889-3001	MS35206-231	96906	SCREW		EA 4	
4	4	PAFZZ 5310-00-631-1294	NAS671-6	80205	NUT, PLAIN, HEXAGON		EA 4	
4	5	XDFZZ	MILT55164-1	81349	TERMINAL BOARD		EA 1	
4	6	PAFZZ 6625-00-618-6402	MR36W075DCVVR	81349	VOIMETER, DIRECT CURRENT		EA 1	
4	7	PAFZZ 5940-00-503-6764	MS25036-1	96906	TERMINAL, LUG		EA 11	
4	8	PAFZZ 5905-00-686-2806	RP151FD4R0KK	81349	RESISTOR, VARIABLE		EA 1	
4	9	PAOZZ 5355-00-579-1210	MS91528-3F28	96906	KNOB		EA 1	
4	10	PAFZZ 5305-00-954-8997	MS35214-60	96906	SCREW		EA 2	
4	11	PAFZZ 5310-00-045-5207	MS15795-908	96906	WASHER, FLAT		EA 10	
4	12	PAFZZ 5310-00-261-8278	MS35338-100	96906	WASHER, LOCK		EA 4	
4	13	XDFZZ	SMB379615	80063	INSULATOR, PLATE		EA 1	
4	14	PAFZZ 5305-00-059-4568	MS35190-253	96906	SCREW		EA 9	
4	15	PAFZZ 5310-00-934-9757	MS35649-282	96906	NUT, PLAIN, HEXAGON		EA 14	
4	16	PAFZZ 5310-00-809-8544	MS27183-7	96906	WASHER, FLAT		EA 26	
4	17	PAFZZ 5310-00-045-3299	MS35338-42	96906	WASHER, LOCK		EA 26	
4	18	PAFZZ 5305-00-984-6194	MS35206-246	96906	SCREW		EA 5	
4	19	XDFZZ	SMO379603	80063	CHASSIS ASSEMBLY, FRONT, UPPER		EA 1	
4	20	XDFZZ	SMB379644	80063	TERMINAL BOARD		EA 1	
4	21	PAFZZ 5310-00-934-9764	MS35649-205	96906	NUT, PLAIN, HEXAGON		EA 4	
4	22	PAFZZ 5940-00-660-3631	MS25036-50	96906	TERMINAL, LUG		EA 4	
4	23	XDFZZ	SMD379599	80063	PANEL ASSEMBLY COVER		EA 1	
4	24	XDFZZ	SMC379623	80063	PLATE, IDENTIFICATION		EA 1	
4	25	XDFZZ	SMO379599-1	80063	PANEL SUBASSEMBLY		EA 1	
4	26	PAFZZ 5320-00-879-6606	MS16535-154	96906	RIVET		EA 4	
4	27	XDFZZ	12S1-15-1AA	71286	STUD, TURNLOCK FASTENER		EA 10	
4	28	PAOZZ 5355-00-579-6390	MS91528-2F28	96906	KNOB		EA 1	
4	29	PAFZZ 5930-00-999-9590	SR0183081MC	81349	SWITCH, ROTARY		EA 1	
4	30	PAFZZ 5930-00-655-1522	MS35058-30	96906	SWITCH, TOGGLE		EA 1	
4	31	XDFZZ	AM44MC6-2P30AMP	74193	CIRCUIT BREAKER		EA 1	
4	32	PAFZZ 5305-00-984-4983	MS35206-226	96906	SCREW		EA 4	
4	33	PAFZZ 6210-00-891-5048	LH75LC15RN	81349	LIGHT, INDICATOR		EA 1	
4	34	XDFZZ	WL111CTYPE1829	81349	LAMP, INCANDE SCENT		EA 1	
4	35	PAFZZ 6210-00-054-5466	26-1131-203	81349	LENS, INDICATOR LIGHT		EA 1	
4	36	PAFZZ 6210-00-836-2564	350-0410-01-203	72619	LAMPHOLDER		EA 1	
4	37	PAFZZ 6625-00-849-0535	MR36W075DCAAR	80063	AMMETER, DIRECT CURRENT		EA 1	
4	38	PAFZZ 5940-00-577-3711	MS25036-3	96906	TERMINAL, LUG		EA 2	
4	39	XDFZZ	SMD379608	80063	PANEL ASSEMBLY, REAR		EA 1	
4	40	PAFZZ 5325-00-225-4844	12S1-11-1AA	71286	STUD, TURNLOCK FASTENER		EA 1	

SECTION II		TM11-6130-236-24P							
(1)	(2)	(3)	(4)	(5)	(6)	(7)	(8)		
ILLUSTRATION							QTY		
(A)	(B)	NATIONAL			DESCRIPTION		INC		
FIG	ITEM	STOCK	PART	FSCM		USABLE ON CODE	IN		
NO	NO	NUMBER	NUMBER				UNIT		
4	41	PAFZZ 5325-00-067-9222	12R1-1AA	71386	RECEPTACLE,TURNLOCK FASTENER		EA	1	
4	42	PAFZZ 5310-00-530-9963	553-1	71386	EYELET,TURNLOCK FASTENER		EA	10	
4	43	PAFZZ 5305-00-984-6192	MS35206-244	96906	SCREW		EA	12	



EL2FR005

Figure 5. Charger, Battery PP-1451/G, Upper Assembly.

SECTION II (1) ILLUSTRATION		(2)	(3)	(4)	(5)	TM11-6130-236-24P (6)	(7)	(8)
(A) FIG NO	(B) ITEM NO	SMR CODE	NATIONAL STOCK NUMBER	PART NUMBER	FSCM	DESCRIPTION	USABLE ON CODE	U/M INC IN UNIT
5	1	PAFZZ	5305-00-989-6265	MS35207-262	96906	SCREW	EA	40
5	2	PAFZZ	5310-00-809-8546	MS27183-8	96906	WASHER,FLAT	EA	42
5	3	PAFZZ	5305-00-957-6266	MS35190-252	96906	SCREW	EA	2
5	4	PAFZZ	5910-00-280-7686	CP5481EG504V1	81349	CAPACITOR, FIXED, PAPER DIELECTRIC	EA	4
5	5	PAFZZ	5310-00-045-3296	MS35338-43	96906	WASHER,LOCK	EA	42
5	6	PAFZZ	5910-00-900-8598	D38697	56289	CAPACITOR,FIXED,ELECTROLYTIC	EA	10
5	7	PAFZZ	5310-00-934-9751	MS35650-302	96906	NUT,PLAIN,HEXAGON	EA	40
5	8	XDFZZ		SMC379630	80063	RETAINER,CAP	EA	10
5	9	XDFZZ		SMD379613	80063	CHASSIS ASSEMBLY, TOP	EA	1
5	10	PAFZZ	5305-00-984-6192	MS35206-244	96906	SCREW	EA	12
5	11	PAFZZ	5310-00-809-4058	MS27183-10	96906	WASHER,FLAT	EA	12
5	12	PAFZZ	5310-00-045-3299	MS35338-42	96906	WASHER,LOCK	EA	28
5	13	PAFZZ	5910-00-827-1667	CP12A1KF474K3	81349	CAPACITOR, FIXED, PAPER DIELECTRI	EA	4
5	14	PAFZZ	5325-00-185-0017	MS35490-27	96906	GROMMET	EA	1
5	15	PAFZZ	5310-00-934-9757	MS35649-282	96906	NUT,PLAIN,HEXAGON	EA	17
5	16	PAFZZ	5305-00-984-6194	MS35206-246	96906	SCREW	EA	10
5	17	PAFZZ	5310-00-809-8544	MS27183-7	96906	WASHER,FLAT	EA	16
5	18	PAFZZ	5310-00-934-9758	MS35649-202	96906	NUT,PLAIN,HEXAGON	EA	2
5	19	PAFZZ	5305-00-889-3116	MS35206-213	96906	SCREW	EA	8
5	20	PAFZZ	5310-00-543-2410	MS35338-40	96906	WASHER,LOCK	EA	8
5	21	PAFZZ	5940-00-503-6764	MS25036-1	96906	TERMINAL,LUG	EA	10
5	22	PAFZZ	5940-00-062-5054	SE205D01	81349	TERMINAL,STUD	EA	8
5	23	PAFZZ	5310-00-045-4007	MS35338-41	96906	WASHER,LOCK	EA	8
5	24	PAFZZ	5310-00-934-9747	MS35649-262	96906	NUT,PLAIN,HEXAGON	EA	4
5	25	PAFZZ	5310-00-983-8483	MS27183-5	96906	WASHER,FLAT	EA	8
5	26	PAFZZ	5305-00-984-4989	MS35206-229	96906	SCREW	EA	4
5	27	XDFZZ		X379	70485	RUBBER CHANNEL	EA	1
5	28	PAFZZ	5310-00-631-1294	NAS671-6	80205	NUT,PLAIN,HEXAGON	EA	4
5	29	PAFZZ	5305-00-984-4992	MS35206-232	96906	SCREW	EA	4
5	30	XDFZZ		MILT55164-1	81349	TERMINAL BOARD	EA	1
5	31	PAFZZ	5905-00-681-4524	RN22V5R0	81349	RESISTOR,FIXED,WIRE WOUND	EA	5

NOTE: LATEST NATIONAL STOCK NUMBER ASSIGNMENTS ARE INCLUDED AT END OF INDEX

STOCK NUMBER	FIGURE NO	ITEM NO	STOCK NUMBER	FIGURE NO	ITEM NO
5310-00-045-3296	1	22	5310-00-809-8546	3	44
5310-00-045-3296	3	43	5310-00-809-8546	5	2
5310-00-045-3296	5	5	5910-00-819-2100	1	31
5310-00-045-3299	1	5	5910-00-827-1667	5	13
5310-00-045-3299	2	9	6625-00-834-8954	1	26
5310-00-045-3299	3	41	5961-00-836-0383	2	25
5310-00-045-3299	4	17	6210-00-836-2564	4	36
5310-00-045-3299	5	12	5305-00-837-1673	2	44
5310-00-045-4007	1	11	5310-00-837-8435	2	34
5310-00-045-4007	2	48	6625-00-849-0535	4	37
5310-00-045-4007	4	1	5310-00-851-2674	3	28
5310-00-045-4007	5	23	5310-00-851-2682	3	23
5310-00-045-5207	2	16	5305-00-889-3000	1	9
5310-00-045-5207	4	11	5305-00-889-3000	2	50
5920-00-050-4962	2	12	5305-00-889-3001	1	25
6210-00-054-5466	4	35	5305-00-889-3001	2	27
5305-00-059-4568	1	7	5305-00-889-3001	4	3
5305-00-059-4568	3	3	5305-00-889-3116	1	29
5305-00-059-4568	4	14	5305-00-889-3116	5	19
5310-00-080-6004	3	32	5910-00-900-8598	5	6
5940-00-082-5054	1	30	5950-00-902-3442	3	27
5940-00-082-5054	5	22	5950-00-902-3443	3	42
5910-00-129-6260	1	3	6130-00-906-1120	1	17
5310-00-167-0702	3	5	5310-00-915-4649	3	7
5310-00-184-8970	3	6	5310-00-934-9746	2	39
5310-00-184-8996	2	43	5310-00-934-9747	1	12
5325-00-185-0017	2	28	5310-00-934-9747	2	47
5325-00-185-0017	5	14	5310-00-934-9747	5	24
5905-00-186-3077	2	7	5310-00-934-9751	1	19
5945-00-230-7738	1	18	5310-00-934-9751	3	45
6120-00-238-9441	3	22	5310-00-934-9751	5	7
5310-00-261-8278	2	15	5310-00-934-9757	1	4
5310-00-261-8278	4	12	5310-00-934-9757	2	11
5305-00-269-3215	3	31	5310-00-934-9757	3	2
5940-00-271-7086	2	24	5310-00-934-9757	4	15
5325-00-276-5954	2	23	5310-00-934-9757	5	15
5920-00-280-3529	2	46	5310-00-934-9758	5	18
5910-00-280-7686	5	4	5310-00-934-9764	2	31
5325-00-281-1557	1	13	5310-00-934-9764	4	21
5310-00-530-9963	4	42	5310-00-934-9766	2	18
5310-00-543-2410	1	28	5310-00-942-5110	2	35
5310-00-543-2410	5	20	5305-00-954-8997	4	10
5940-00-577-3711	4	38	5305-00-957-6266	5	3
5355-00-579-1210	4	9	5961-00-959-5046	3	14
5355-00-579-6390	4	28	5961-00-978-5966	2	2
5310-00-582-5965	3	30	5905-00-982-7725	2	6
6625-00-618-6402	4	6	5310-00-983-8483	1	10
5310-00-631-1294	1	24	5310-00-983-8483	2	49
5310-00-631-1294	2	26	5310-00-983-8483	4	2
5310-00-631-1294	4	4	5310-00-983-8483	5	25
5310-00-631-1294	5	28	5305-00-984-4983	4	32
5310-00-637-9541	3	33	5305-00-984-4989	5	26
5930-00-655-1522	4	30	5305-00-984-4992	5	29
5930-00-655-1582	2	1	5305-00-984-6192	1	2
5940-00-660-3631	4	22	5305-00-984-6192	3	39
5910-00-667-7178	2	22	5305-00-984-6192	4	43
5905-00-681-4524	5	31	5305-00-984-6192	5	10
5905-00-686-2806	4	8	5305-00-984-6194	1	16
5310-00-725-4715	3	9	5305-00-984-6194	2	14
5310-00-725-8532	3	17	5305-00-984-6194	4	18
5310-00-809-4058	3	29	5305-00-984-6194	5	16
5310-00-809-4058	5	11	5305-00-984-6195	1	27
5310-00-809-8544	1	6	5305-00-984-7341	3	11
5310-00-809-8544	2	10	5305-00-988-1724	3	26
5310-00-809-8544	3	40	5305-00-989-6265	5	1
5310-00-809-8544	4	16	5305-00-989-7434	1	20
5310-00-809-8544	5	17	5305-00-989-7434	3	37
5310-00-809-8546	1	21	5930-00-999-9590	4	29

PART NUMBER	FSCM	FIG NO	ITEM NO	PART NUMBER	FSCM	FIG NO	ITEM NO
AM44MC6-2P30AMP	74193	4	31	CLS832-3	46384	3	17
AN50084-12	88044	2	44	CP12A1KF474K3	81349	5	13
AN501B10-18	88044	2	8	CP53B1EP105K1	81349	1	3
AN960B416	88044	3	5	CP54B1EG504V1	81349	5	4
CE13C500J	81349	2	21	CP54B1KE105K1	81349	1	31
CLSS032-3	46384	3	9	C2060-6	81860	3	25
CLS832-2	46384	2	34	O38697	56289	5	6

PART NUMBER	FSCM	FIG NO	ITEM NO	PART NUMBER	FSCM	FIG NO	ITEM NO
F028250V1-4AS	81349	2	46	MS35338-42	96906	2	9
LH75LC15RN	81349	4	33	MS35338-42	96906	3	41
MILF15160-07	81349	2	12	MS35338-42	96906	4	17
MILF21346-1	81349	2	19	MS35338-42	96906	5	12
MILT55164-1	81349	4	5	MS35338-43	96906	1	22
MILT55164-1	81349	5	30	MS35338-43	96906	5	5
MILT55164-1TYPE	81349	1	23	MS35338-44	96906	3	30
MILT55164-2	81349	2	20	MS35338-46	96906	3	33
MR36W075DCAAR	80063	4	27	MS35338-97	96906	2	43
MR36W075DCVVR	81349	4	6	MS35489-17	96906	1	13
MS15795-903	96906	2	40	MS35489-33	96906	2	28
MS15795-908	96906	2	16	MS35489-46	96906	2	23
MS15795-908	96906	4	11	MS35490-27	96906	5	14
MS16535-154	96906	4	26	MS35649-202	96906	5	18
MS20427-2C4	96906	3	19	MS35649-205	96906	2	31
MS24178	96906	1	18	MS35649-205	96906	2	21
MS25036-1	96906	4	7	MS35649-245	96906	2	39
MS25036-1	96906	5	21	MS35649-262	96906	1	12
MS25036-3	96906	4	38	MS35649-262	96906	2	47
MS25036-50	96906	4	22	MS35649-262	96906	5	24
MS27183-10	96906	3	29	MS35649-282	96906	1	4
MS27183-10	96906	5	11	MS35649-282	96906	2	11
MS27183-14	96906	3	32	MS35649-282	96906	3	2
MS27183-5	96906	1	10	MS35649-282	96906	4	15
MS27183-5	96906	2	49	MS35649-282	96906	5	15
MS27183-5	96906	4	2	MS35650	96906	3	45
MS27183-5	96906	5	25	MS35650-302	96906	1	19
MS27183-7	96906	1	6	MS35650-302	96906	5	7
MS27183-7	96906	2	10	MS35650-305	96906	2	18
MS27183-7	96906	3	40	MS35691-1	96906	3	28
MS27183-7	96906	4	16	MS35691-17	96906	3	23
MS27183-7	96906	5	17	MS35691-8	96906	3	4
MS27183-8	96906	1	21	MS90725-65	96906	3	31
MS27183-8	96906	3	44	MS91528-2F2B	96906	4	28
MS27183-8	96906	5	2	MS91528-3F2B	96906	4	9
MS3102E28-3P	96906	1	8	MS91586-3	96906	1	26
MS35058-30	96906	4	30	MILT55155-20	81349	2	4
MS35059-23	96906	2	1	NAS671-6	80205	1	24
MS35190-252	96906	5	3	NAS671-6	80205	2	26
MS35190-253	96906	1	7	NAS671-6	80205	4	4
MS35190-253	96906	3	3	NAS671-6	80205	5	28
MS35190-253	96906	4	14	NE7823	94315	3	22
MS35191-273	96906	3	11	NE7824	94315	3	42
MS35206-213	96906	1	29	RN22V5R0	81349	5	31
MS35206-213	96906	5	19	RP101UB100K	81349	2	7
MS35206-226	96906	4	32	RP101UB350KK	81349	2	6
MS35206-229	96906	5	26	RP101UB501KK	81349	2	37
MS35206-230	96906	1	9	RP151FD4ROKK	81349	4	8
MS35206-230	96906	2	50	SE205D01	81349	1	30
MS35206-231	96906	1	25	SE205D01	81349	5	22
MS35206-231	96906	2	27	SMB379612	80063	2	32
MS35206-231	96906	4	3	SMB379615	80063	4	13
MS35206-232	96906	5	29	SMB379618	80063	3	24
MS35206-244	96906	1	2	SMB379619-1	80063	3	15
MS35206-244	96906	3	39	SMB379619-2	80063	3	16
MS35206-244	96906	4	43	SMB379622	80063	1	15
MS35206-244	96906	5	10	SMB379624	80063	3	34
MS35206-246	96906	1	16	SMB379629	80063	1	14
MS35206-246	96906	2	14	SMB379632-1	80063	2	42
MS35206-246	96906	4	18	SMB379632-2	80063	2	3
MS35206-246	96906	5	16	SMB379633	80063	2	17
MS35206-247	96906	1	27	SMB379635	80063	3	1
MS35206-280	96906	3	26	SMB379636	80063	2	45
MS35207-262	96906	5	1	SMB379637	80063	2	29
MS35207-263	96906	1	20	SMB379641	80063	2	13
MS35207-263	96906	3	37	SMB379642	80063	2	38
MS35214-60	96906	4	10	SMB379644	80063	4	20
MS35215-74	96906	3	8	SMB379647	80063	3	36
MS35228-43	96906	3	43	SMB379647-1	80063	3	10
MS35335-88	96906	2	35	SMB379648-1	80063	3	12
MS35338-100	96906	2	15	SMB379648-2	80063	3	35
MS35338-100	96906	4	12	SMC379611	80063	2	41
MS35338-101	96906	3	6	SMC379621GRI	80063	3	13
MS35338-40	96906	1	28	SMC379621GR2	80063	3	21
MS35338-40	96906	5	20	SMC379623	80063	4	24
MS35338-41	96906	1	11	SMC379625	80063	1	17
MS35338-41	96906	2	48	SMC379630	80063	5	8
MS35338-41	96906	4	1	SMC379658	80063	3	38
MS35338-41	96906	5	23	SMC379658-1	80063	3	20
MS35338-42	96906	1	5	SMC379659	80063	3	48

PART NUMBER	FSCM	FIG NO	ITEM NO	PART NUMBER	FSCM	FIG NO	ITEM NO
SMC379659-1	80063	3	47	X379	70485	5	27
SMD379599	80063	4	23	LN1614	81349	2	2
SMD379599-1	80063	4	25	LN29858	81349	2	25
SMD379603	80063	4	19	12R1-1AA	71286	3	18
SMD379605	80063	3	50	12R1-1AA	71286	4	41
SMD379608	80063	4	39	12S1-11-1AA	71286	4	40
SMD379609	80063	3	49	12S1-15-1AA	71286	4	27
SMD379610	80063	2	33	1209N	06540	3	7
SMD379610-1	80063	2	30	122-196	79963	2	24
SMD379613	80063	5	9	194-1246511F	03508	3	14
SMD379614	80063	3	46	26-1131-203	81349	4	35
SMD379617	80063	1	1	30010-4	14655	2	22
SMD379643	80063	2	5	3321	97622	3	27
SMD379643-1	80063	2	36	350-0410-01-203	72619	4	36
SRO1B30B1MC	81349	4	29	5S3-1	71286	4	42
WL111CTYPE1829	81349	4	34				

LATEST NATIONAL STOCK NUMBER ASSIGNMENTS

STOCK NUMBER	FIGURE NO.	ITEM NO.
5310-00-045-5202	2	40
5325-00-067-9222	4	41
5910-00-082-4751	2	21
5325-00-225-4844	4	40
5320-00-233-4836	3	19
5325-00-267-9222	3	18
5340-00-514-1330	3	25
5935-00-577-2697	1	8
5320-00-879-6606	4	26
6210-00-891-5048	4	38
5305-00-954-9009	3	8
5310-00-983-9467	3	4

ADDITIONAL LATEST NATIONAL STOCK NUMBER ASSIGNMENTS

5940-00-503-6764	4	7
5950-00-503-6764	5	21

By Order of the Secretary of the Army:

FRED C. WEYAND
General, United States Army
Chief of Staff

Official:

PAUL T. SMITH
Major General, United States Army
The Adjutant General

Distribution:

Active Army:

USASA (2)	SAAD (30)
DCSC-E (2)	LBAD (14)
COE (1)	TOAD (14)
TSG (1)	SHAD (3)
USAARENBD (1)	HISA (Ft Monmouth) (33)
USARADB (1)	Ft Richardson (ECOM Ofc) (2)
USAAVNTBD (1)	Svc Colleges (1)
DARCOM (1)	USASESS (5)
MICOM (2)	USAICS (3)
TECOM (2)	USAADS (2)
TRADOC (2)	USAFAS (2)
LOGCOMD (3)	USAARMS (2)
OS Maj Comd (4)	USAIS (2)
USACC (4)	USAES (2)
MDW (1)	USATSCH (2)
Armies (2)	USMA (2)
Corps (2)	USAATC (2)
Co (1)	MAAG (1)
Instl (2) except	USARMIS (1)
Ft Gordon (10)	USAERDAA (1)
Ft Huachuca (10)	USAERDAW (1)
Ft Carson (5)	USAJFKCENMA (2)
Ft Gillem (10)	Sig FLDMS (1)

ARNG: State AG (3); units-same as active Army except allowance is one (1) copy each.

USAR: None.

For explanation of abbreviation used, see AF 310-50.



SOMETHING WRONG WITH THIS MANUAL?

THEN... JOT DOWN THE DOPE ABOUT IT ON THIS FORM, TEAR IT OUT, FOLD IT AND DROP IT IN THE MAIL!

FROM: (YOUR UNIT'S COMPLETE ADDRESS)

Commander
Stateside Army Depot
ATTN: AMSTA-US
Stateside, N.J. 07703

DATE 10 July 1975

PUBLICATION NUMBER

TM 11-5840 340-12

DATE

23 Jan 74

TITLE

Radar Set AN/SPS-76

BE EXACT... PIN-POINT WHERE IT IS

IN THIS SPACE TELL WHAT IS WRONG AND WHAT SHOULD BE DONE ABOUT IT:

PAGE NO.	PARA-GRAPH	FIGURE NO.	TABLE NO.
----------	------------	------------	-----------

2-25	2-28		
3-10	3-3	3-1	
5-6	5-8		

FO3

Recommend that the installation antenna alignment procedure be changed throughout to specify a 2° IFF antenna lag rather than 1°.

REASON: Experience has shown that with only a 1° lag, the antenna servo system is too sensitive to wind gusting in excess of 25 knots, and has a tendency to rapidly accelerate and decelerate as it hunts, causing strain to the drive train. Hunting is minimized by adjusting the lag to 2° without degradation of operation.

Item 5, Function column. Change "2 db" to "3db."

REASON: The adjustment procedure for the TRANS POWER FAULT indicator calls for a 3 db (500 watts) adjustment to light the TRANS POWER FAULT indicator.

Add new step f.1 to read, "Replace cover plate removed in step e.1, above."

REASON: To replace the cover plate.

Zone C 3. On J1-2, change "+24 VDC to "+5 VDC."

REASON: This is the output line of the 5 VDC power supply. +24 VDC is the input voltage.

TYPED NAME, GRADE OR TITLE, AND TELEPHONE NUMBER

SSG I. M. DeSpirito 999-1776

SIGN HERE:

SSG I. M. DeSpirito

DA FORM 2028-2 (TEST) 1 AUG 74

P.S.--IF YOUR OUTFIT WANTS TO KNOW ABOUT YOUR MANUAL "FIND" MAKE A CARBON COPY OF THIS AND GIVE IT TO YOUR HEADQUARTERS.

HISA 1686-75

TEAR ALONG DOTTED LINE

RECOMMENDED CHANGES TO EQUIPMENT TECHNICAL MANUALS



SOMETHING WRONG WITH THIS MANUAL?

THEN... JOT DOWN THE DOPE ABOUT IT ON THIS FORM, TEAR IT OUT, FOLD IT AND DROP IT IN THE MAIL!

FROM: (YOUR UNIT'S COMPLETE ADDRESS)

DATE

PUBLICATION NUMBER

DATE

TITLE

BE EXACT... PIN-POINT WHERE IT IS

IN THIS SPACE TELL WHAT IS WRONG AND WHAT SHOULD BE DONE ABOUT IT:

PAGE NO.	PARA-GRAPH	FIGURE NO.	TABLE NO.

TEAR ALONG DOTTED LINE

TYPED NAME, GRADE OR TITLE, AND TELEPHONE NUMBER

SIGN HERE:

FILL IN YOUR
UNIT'S ADDRESS

FOLD BACK

DEPARTMENT OF THE ARMY

Commander
US Army Electronics Command
ATTN: DRSEL-MA-Q
Fort Monmouth, New Jersey 07703

FOLD BACK

CUT ALONG DOTTED LINE

